



**SOUTH WALTON**  
FLORIDA  
VISITSOUTHWALTON.COM



**SOUTH WALTON**  
FLORIDA

# BEACH GUIDE

INFORMATION & SAFETY



## MAP OF SOUTH WALTON

**REGIONAL BEACH ACCESSES**

- 1 MIRAMAR BEACH: SCENIC GULF DRIVE
- 2 SCENIC GULF DRIVE: SCENIC GULF DRIVE
- 3 DUNE ALLEN: W. SCENIC HWY 30A
- 4 FORT PANIC: W. SCENIC HWY 30A
- 5 ED WALLINE: S. COUNTY HWY 393
- 6 GULFVIEW HEIGHTS: GULFVIEW HEIGHTS STREET
- 7 BLUE MOUNTAIN: S. COUNTY HWY 83
- 8 SANTA CLARA: BRAMBLE GROVE PLACE
- 9 INLET BEACH: S. ORANGE STREET

**BAY ACCESSES POINTS**

- 10 HAUGEN PARK: SHORE DRIVE
- 11 LEGION PARK: CREST DRIVE
- 12 CESSNA LANDING: N. COUNTY HWY 393
- 13 KELOGG NATURE CENTER: NELLIE DRIVE
- 14 THOMAS PILCHER PARK: US HWY 331
- 15 BAYSIDE RANCHETTES: E. MITCHELL AVENUE
- 16 POINT WASHINGTON: N. COUNTY HWY 395

**BEACH WHEELCHAIR AVAILABILITY AND BEACH ACCESS HANDICAP ACCESSIBILITY INFORMATION IS AVAILABLE FROM THE SOUTH WALTON FIRE DISTRICT AT SWFD.ORG**

**LIFEGUARDED BEACHES ARE AVAILABLE IN PEAK SEASON. SWIM AT OWN RISK.**

SCALE 1 IN = 1 MI

- POINT WASHINGTON STATE FOREST
- STATE PARK AREAS
- A TOPSAIL HILL STATE PRESERVE
- B EDEN GARDENS STATE PARK
- C GRAYTON BEACH STATE PARK
- D DEER LAKE STATE PARK

## HELP PROTECT OUR SEA TURTLES

From May 1 through October 31, our beaches are precious nesting grounds for sea turtles. Without your support, the turtle populations will decline.

### HERE'S HOW TO HELP:

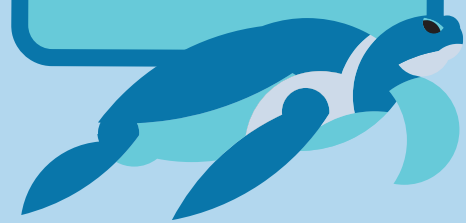
- Keep the beaches #CleanDarkFlat
- Prevent all lights from illuminating the beach
- Fill in holes and knock down sandcastles before leaving the beach
- Look but don't touch - disturbing a turtle or nest is a federal and state violation

For more about sea turtles, beach rules, "Leave No Trace" policy and beach safety guidance, go to [VisitSouthWalton.com](http://VisitSouthWalton.com).

**Thank you for being a friend & protecting sea turtles!**

If you find an injured, sick or dead sea turtle, or to report someone disturbing a sea turtle nest, please call the South Walton Turtle Watch Hotline.

**South Walton Turtle Watch:**  
(850) 362-9501



South Walton's 26 miles of beaches are beautiful, scenic and refreshing – and to keep them that way, we all must respect our fellow visitors and the natural environment.

The following beach ordinances and state statutes ensure the best experience for everyone.

### KNOW BEFORE YOU GO:

- Leave No Trace: overnight, unattended items will be discarded
- Glass containers prohibited
- Solicitation prohibited
- Removal of sand, vegetation or Gulf water prohibited
- Keep off dunes
- No excessive noise
- Tents must be 10' x 10' or smaller and are to be set up only on the top 1/3 of the available beach space
- Camping prohibited
- No metal shovels
- Fill in holes dug in sand
- No littering
- No nudity
- Please allow a 15' setback from dunes and water's edge for emergency vehicles
- Vehicles and dogs require permits\*
- Bonfires require a permit\*\*
- No charcoal grills\*\*\*

Violations of the beach rules may result in fines and/or other penalties.

\*Vehicle and dog permits are for residents and property owners only. If you fall into this category, you may obtain a permit through the **Walton County Administration Office**, (850) 892-8155.

\*\*Permitted bonfires are allowed at most public beach accesses, which are identified by an access number located at the beginning of each boardwalk. Accesses not clearly marked are privately owned and require written permission from the property owner before a permit is issued. For more information, contact the **South Walton Fire District**, (850) 267-1298.

### LEAVE NO TRACE:

To keep our beaches clean and safe for both marine life and beachgoers, Walton County enforces Municipal Code 22-54 (g). This code prohibits beach chairs, umbrellas, tents and other personal items from being left unattended. Items left on the beach overnight (from one hour after dusk to one hour after sunrise) will be discarded unless otherwise permitted.

Your cooperation with this municipal code will ensure the area's beaches remain pristine while also ensuring that personal articles do not interfere with nesting sea turtles, beach maintenance and emergency vehicles.

For more about South Walton's beach rules, "Leave No Trace" policy and beach safety guidance, go to [VisitSouthWalton.com](http://VisitSouthWalton.com).

### FISHING LICENSE:

Visitors over the age of 16 and residents under the age of 65 are required by the state to have a Fishing License unless they are participating in a fishing charter. Licenses can be obtained through **Florida Fish and Wildlife Conservation Commission**, [www.MyFWC.com](http://www.MyFWC.com).

\*\*\*Charcoal grills are not allowed on the beach. All grilling must be done on Propane grills measuring at 225 square inches (approximately 12"x18" rectangular or 16" in diameter for circular grills) or smaller.

## BEACH FLAG WARNINGS

 **DOUBLE RED FLAGS**  
 **WATER CLOSED TO PUBLIC\***

 **RED FLAG - HIGH HAZARD**  
High Surf and/or Strong Currents

TEXT **SAFETY** TO 31279 FOR SURF CONDITIONS

### BEACH SAFETY:

Check surf conditions along the 26 miles of coastline by taking note of the colored flag system designed for your safety.

Current flag conditions are posted daily at [BeachSafety.com](http://BeachSafety.com)

**Lifeguards are available at Regional Beach Accesses**

**March 1 - October 31** with limited roving coverage year round.

Lifeguards are provided by South Walton Fire District and funded as a part of the Visit South Walton Beach Safety Program.

Regional Beach Accesses include Miramar Beach, Scenic Gulf Drive, Dune Allen, Fort Panic, Ed Walline, Gulfview Heights, Blue Mountain, Santa Clara and Inlet Beach.

### BEACH ACCESS FOR VISITORS WITH DISABILITIES:

- ADA accessible walkovers are available at five beach access points including Miramar Beach, Scenic Gulf Drive, Dune Allen, Ed Walline, Santa Clara, and Inlet Beach.

- The South Walton Fire District (SWFD) offers beach wheelchairs during the lifeguard season on a first-come-first-served basis. For more information, visit [SWFD.org](http://SWFD.org)

For more information on ADA accessible activities and accommodations, contact **Walton County Tourism** at (850) 267-1216.

For more information and tips on beach safety, go to [VisitSouthWalton.com/Beach-Safety](http://VisitSouthWalton.com/Beach-Safety) or call (800) 822-6877.

## KNOW BEFORE YOU GO!

 **YELLOW FLAG - MEDIUM HAZARD**  
Moderate Surf and/or Currents

 **GREEN FLAG - LOW HAZARD**  
Calm Conditions, Exercise Caution

 **PURPLE FLAG - STINGING MARINE LIFE**  
Man O' War, Jellyfish, Stingrays

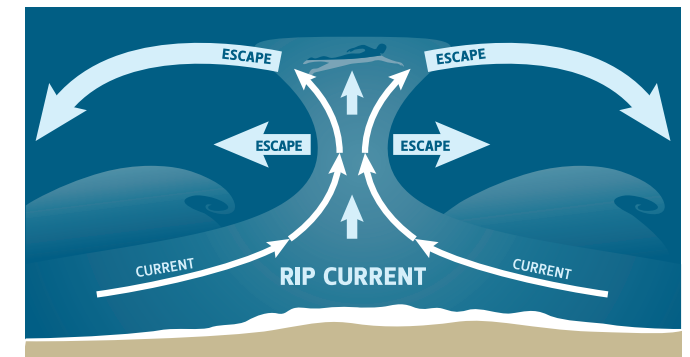
\*Entering the Gulf during double red flag conditions can result in a \$500 fine and criminal charges. Absence of flags does not assure safe waters. Swim at your own risk. For emergencies call or text 911.

### RIP CURRENTS:

Rip currents are powerful currents of water that can sweep even the strongest swimmers out to sea.

#### What to do if you're caught in a rip current

- Don't panic or swim against the current
- Float with the current until it subsides
- Swim parallel to shore and diagonally back in



#### What to do if someone else is caught in a rip current

- Have someone call 911, give accurate landmarks (beach safety flag poles are numbered)
- Do not enter the water, you too will be caught in the current
- Throw them a flotation device
- Try not to lose sight of the victim



**SOUTH WALTON**  
FLORIDA